
C.2 Hardened syngo MR software & Embedded Control

Starting with the syngo MR E11C version the operating system is hardened to provide best security for your system. This software includes the following changes in regards of security:

- ❑ *Longer and more complex password rules possible, if used by customer (configuration: auto login off)*
- ❑ *Changes to Advanced User:*
 - *Advanced User has more rights than normal meduser account but is still running under the meduser account*
 - *Advanced User access is disabled by default. It can be enabled via Service UI*
 - *If you enable the Advanced User, you need to specify a site-specific non-standard password*
- ❑ *Virus scanner is replaced by the whitelisting software Embedded Control. Only registered software modules are permitted to be executed on the scanner*



WARNING

With syngo MR E11C you can't execute scripts or programs not delivered with syngo MR E11C system itself while Embedded Control is in ENABLED mode (which is the system default).

Deploy IDEA sequence or ICE Program with Embedded Control

To be able to deploy new IDEA sequences, ICE programs, other IDEA artifacts to your hardened syngo MR E11C host or to execute own scripts and programs on your host, you have to switch the Embedded Control into UPDATE mode. After deployment of your files you have to switch back to the ENABLED mode to keep your system protected.



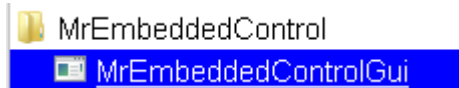
WARNING

Always make sure Embedded Control is ENABLED before starting an examination or scanning process with your system.

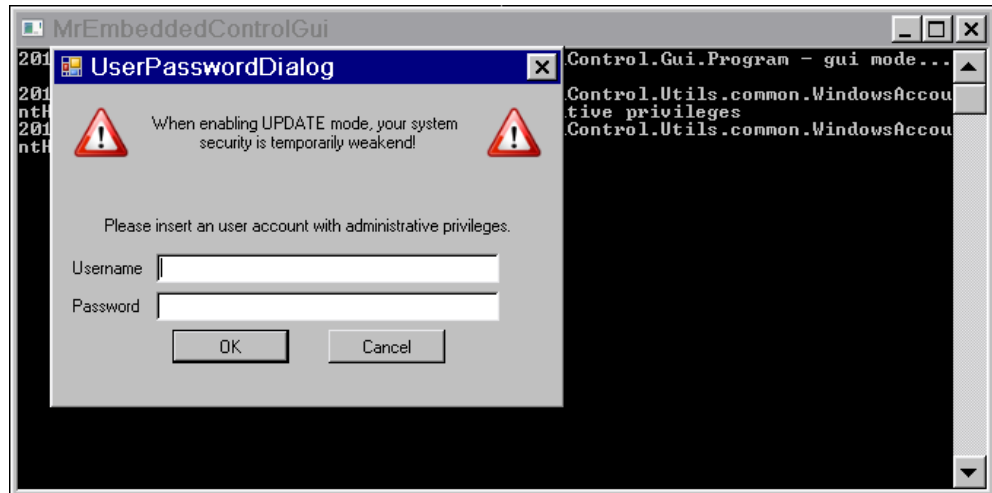
Your syngo MR E11C system is only CE-labeled if Embedded control is in ENABLED mode.

With the following steps you can switch the modes of the Embedded Control on your system:

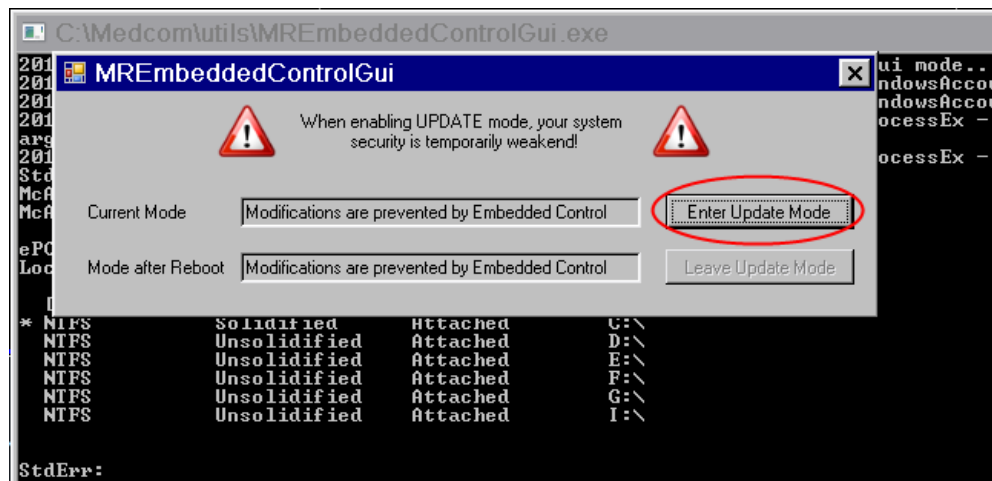
1. Switch into Advanced User mode (for the password, contact your IT-Admin, Lead Tech or Head of Radiology)
2. Press Ctrl+Esc to open the Startmenu
3. Start the MrEmbeddedControlGui tool (All Programs -> MrEmbeddedControl -> MrEmbeddedControlGui):



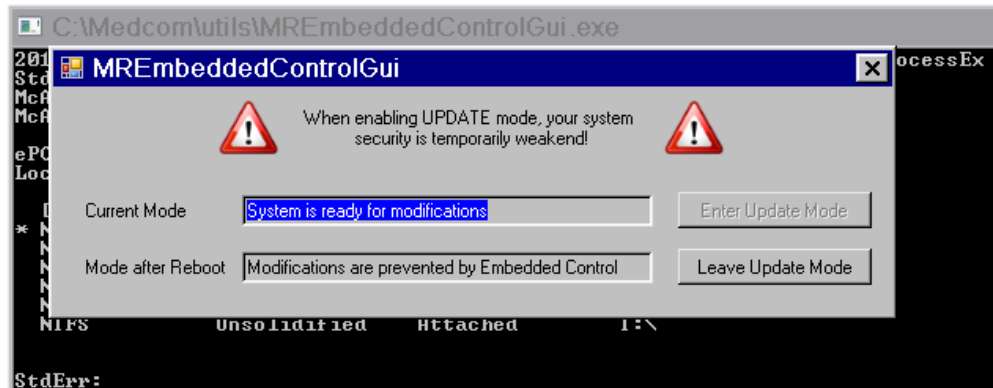
4. You will be prompted to give a special account to start the tool. You can use the SYADMIN account or any other system account inside the Administrators group. For the password, contact your IT-Admin, Lead Tech or Head of Radiology):



5. Switch the Embedded Control system into UPDATE mode by clicking the Update button:



6. The line "Current Mode" indicates that your system is now ready for your modifications. You can now deploy your IDEA files to the system or deploy own scripts and programs.



7. After finishing your modifications and to reenale security, press the button "Leave Update Mode". This reenables the Embedded Control security for your system.

Please make sure that the Embedded Control system is always running in ENABLED mode. The UPDATE mode is only allowed and required for copying your IDEA artifacts to the syngo MR E11C host.